

Switched Enclosure Auxillary Contact

Auxillary Contact

Auxillary Contact

HUBBELL

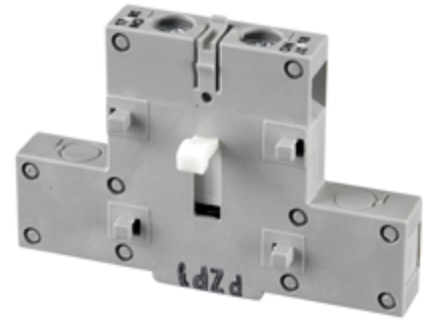


Ordering Information

| Description | UPC | Catalog Number |
|--|--------------|----------------|
| Auxiliary contact, 1 NO, A600 pilot duty, break before break (10A, 600V) | 783585955131 | HBLAC2 |

Contact Type

Break before Break



Standards

Listed to UL Standard
Certified to CSA Standard

Performance

Electrical

| | |
|----------------------|--|
| Current Interrupting | Certified for current interrupting at full rated current voltage |
| Dielectric Voltage | Withstands 3,000V Min |
| Max. Working Voltage | 600V RMS |
| Operations | Mechanical 10,000 cycles; Electrical 6,000 cycles |

Online Resources

eCatalog
Installation Instructions

Dimensions in Inches (mm)

Hubbell Wiring Device-Kellems • Hubbell Incorporated (Delaware) • 40 Waterview Drive • Shelton, CT 06484

Phone (800) 288-6000 • Fax (800) 255-1031 • Specifications subject to change without notice.

